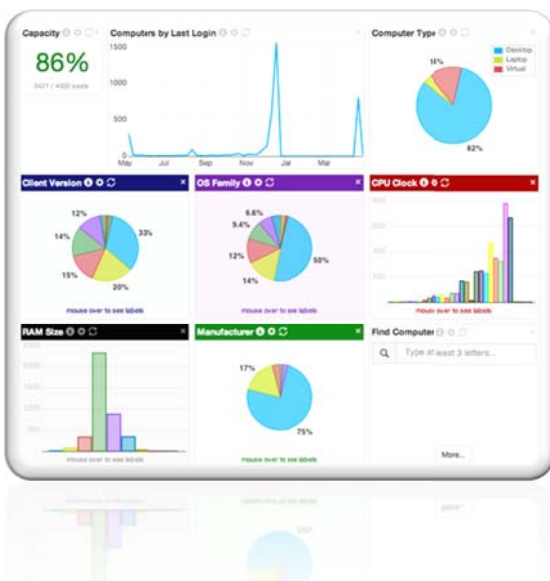


Desktop to Datacentre, Virtual to Cloud K2 does Software Asset Management

Sassafras K2-KeyServer version 7.4 released

Sassafras Software, a pioneer in Software Asset Management (SAM) and IT Asset Management (ITAM), has released a major upgrade of its award-winning SAM/ITAM solution, K2-KeyServer. K2 version 7.4 adds support for Datacentre Processor Value Unit (PVU) and Core License Metrics, Configuration Logging with customisable alerts, an enhanced Web Interface and much, much more. K2 serves a diverse, global market of millions of computers at thousands of businesses, universities, military and government sites – saving hundreds of millions of dollars.

K2's Optimisation Analytics lead to better Licensing Contracts



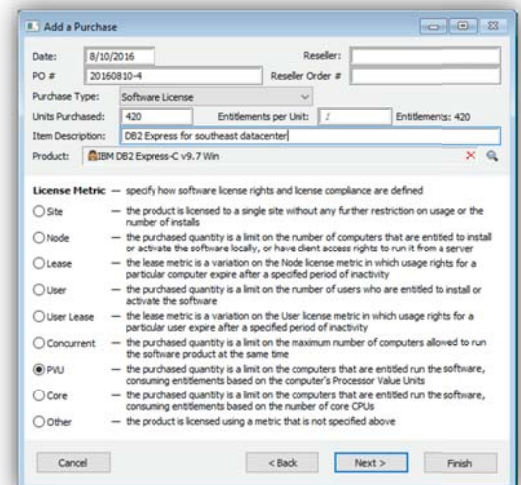
Gartner analyst Stephen White recently noted that SAM professionals are beginning a sustained shift toward license optimisation and cost control. As SAM practices evolve Sassafras continues to drive change with market-leading methods for software license optimisation. K2's policy-driven entitlement management has provided unique and highly effective cost reduction methods for many years. Now K2's new license policy enhancements offer increasingly flexible and effective methods for distinguishing between the critically important metrics of deployment vs. license consumption. The result is that your IT team receives the definitive analysis that you need for negotiating favourable software licensing contracts.

Manage Data Centre Software Costs with PVU & Core Licenses

Gartner estimates that Data Centre software licensing will account for 54% of organisational software spending in 2016 and beyond. K2 v. 7.4 addresses this growing industry requirement by delivering its unique software license optimisation capability to support Processor Value Unit (PVU) and Core License Metrics to tame the cost of IBM, Oracle, SAP, and Microsoft licensing.

JavaScript Integration Automates Administrative Tasks

K2's Automated Administrative tasks with JavaScript Integration take the pain and drudgery out of repeatable configuration and management tasks. Scripted tasks extend new methods to import/export data from and to diverse systems. K2's embedded JavaScript engine will execute automated scripts that access, read, and modify the main asset objects in KeyServer such as computers, policies, and software products.

The image shows a screenshot of the 'Add a Purchase' dialog box. It contains fields for Date (8/10/2016), Reseller, PO # (20160810-4), Reseller Order #, Purchase Type (Software License), Units Purchased (420), Entitlements per Unit (2), and Entitlements (420). The Item Description is 'DB2 Express for southeast datacenter' and the Product is 'IBM DB2 Express-C v9.7 Win'. Below these fields is a 'License Metric' section with radio buttons for Site, Node, Lease, User, User Lease, Concurrent, PVU (selected), Core, and Other. Each option has a brief description of the license metric. At the bottom are 'Cancel', '< Back', 'Next >', and 'Finish' buttons.

Customer Support & Contact Info

Free evaluation copies and product information:

Customer Support <info@keyserver.com.au>

Call: 1800 141312

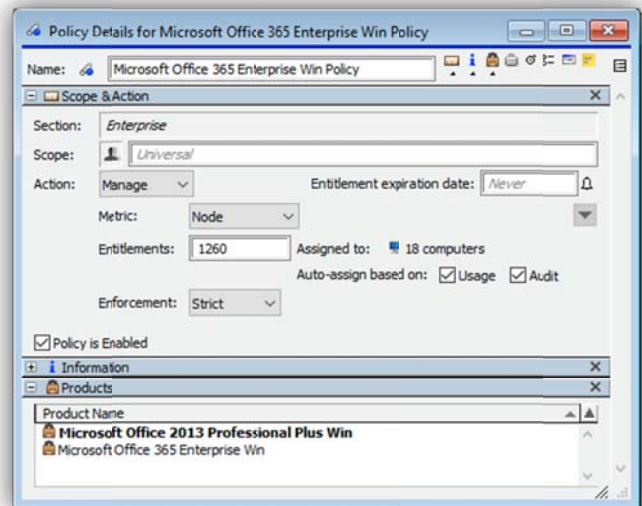
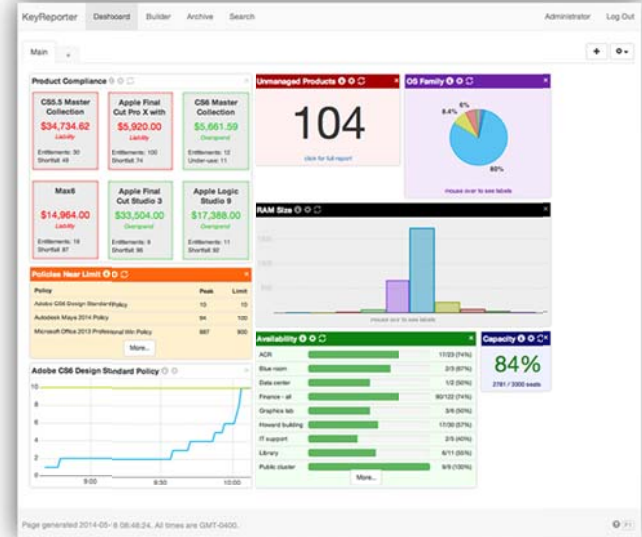
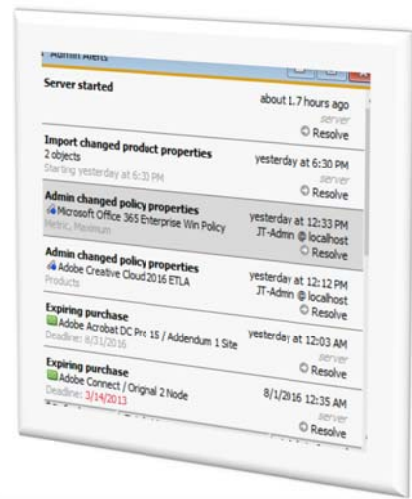
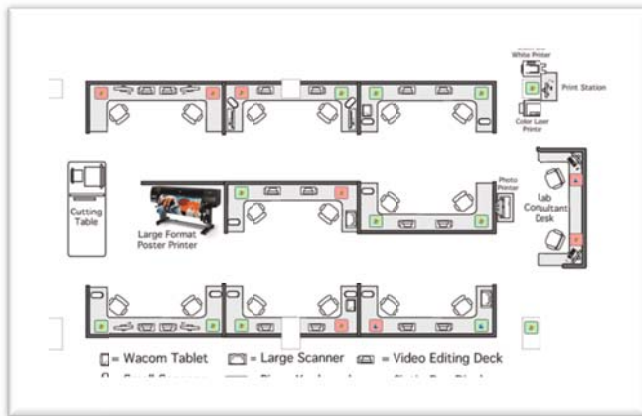
www.keyserver.com.au

Federated Management enhancements strengthen the Power of ITAM Teams

In 2015, Sassafras delivered Federated Management to pave the way for large organisations to build team-centric admin protocols for federated SAM/ITAM management. With the release of K2 v 7.4, Sassafras strengthens this capability with a completely new and extensive Configuration Logging Journal with configurable alerts and emails.

Enhanced Web Reports Builder and Improved Availability Maps

K2's Enhanced Web Reports Builder provides a more intuitive and flexible interface for on-line report generation and scheduling. K2 7.4 Availability Maps can identify computers that are turned off vs. computers that are on but not logged into. A new public view has been added to display a prediction of future availability based on historical patterns – i.e. an indication of which hours are busiest. And an “admin-only view” displays a “Heat Map” that shows which computers in each division have been logged into the most (and the least).



Award Winning Software Asset Management

In 2015, Sassafras Software was voted #1 in SAM Tool Customer Satisfaction by the readers of The ITAM Review and we continue to hold the #1 position today. As winner of a coveted SIIA CODIE award for “Best Asset Management Solution,” and recognised by the BSA, K2 tracks and manages access to hardware and software assets with detailed license entitlement reconciliation, Software License Optimisation (SLO), and usage reporting for any combination of physical, virtual, and thin client computers running Windows, Macintosh, Linux, or Solaris operating systems.

Integration and Scalability

K2's data can be easily integrated with other IT Management and Procurement systems for customised reports that combine data from multiple sources. K2 scales from managing small lab facilities with just a few dozen computers to global enterprises managing tens of thousands of computers across global networks. One of the world's largest IT Consulting firms manages software compliance and optimisation with K2 on their global estate of 150,000 computers.